

MARCH NEWSLETTER 2008

Quote of the month: An eye for an eye ends up making the world blind. *M.K. Gandhi*

GAP Community Child Care Center

**Cold or Flu: Learn the differences between the two.
Provided by www.ask.com**



Both a cold and the flu are viral infections that cause similar systems, such as coughing and sore throat.

Here's the difference. A cold is only a minor viral infection of the nose and throat, while the flu, on the other hand, is usually more severe, with symptoms that include the sudden onset of high fever and the addition of aches and pains.

It's important to learn the differences between the two, so that you can talk to your doctor within 2 days of the start of your symptoms if you suspect you have the flu.

The flu generally strikes 1 to 33 days after exposure to the virus.

Common flu symptoms have been identified for three different age groups: 1) adults and children 5 years of age and older; 2) children younger than age 5; 3) elderly individuals.

Recognizing flu in children younger than age 5.

Call your pediatrician if you observe or your child from the following

Fever

Vomiting

Diarrhea

Nasal Inflammation

Sore throat

Please dress your children in appropriate clothing.



DID YOU KNOW!!!



GAP recently went through our NAEYC accreditation visitation, GAP has been accredited through NAEYC since 2001.

NAEYC Accreditation represents the mark of quality in early childhood education. To achieve NAEYC Accreditation, early childhood education programs volunteer to be measured against the most robust and rigorous national standards on education, health and safety. Today, more than 11,000 NAEYC accredited early childhood education programs serve families around the nation.

NAEYC accredited programs invest in early childhood education because they believe in the benefits to children and families. Early childhood experiences—from birth to age 8—have an enormous impact on children’s lifelong learning and positively contribute to their health and development. Early childhood education programs with the mark of quality benefit children with greater readiness for and success in school.

Why accreditation matters

Parents choosing an early childhood education program can be overwhelmed by trying to find the highest-quality program for their child. NAEYC Accreditation is the mark of quality that families are looking for. NAEYC Accreditation gives families the chance to make the Right Choice for Kids.



Important dates to remember!!

March 13th 2008: Smithsonian's Discovery Theater presents "going the distance", stories of Wilma Rudolph and Jesse Owens. The performance will be held in the Angel's class at 10:30 am.

March 24th 2008: Joe Pipik and his back pack theater will perform a puppet show. The show will be held in the Angel's class, at 10:00 am.

April 17th 2008 the Chipmunks and the Owl's classes will go to the National Zoo, parents are encouraged to accompany them.

We are planning a trip to Sesame Place theme park in the month of May located outside of Philadelphia, Pennsylvania.

If you are interested in going please let the teachers know as soon as possible, this trip is for the Owls and Chipmunk classes.

Please note each child must be accompanied by an adult.



Birthday wishes

Mohamed 3/21/04

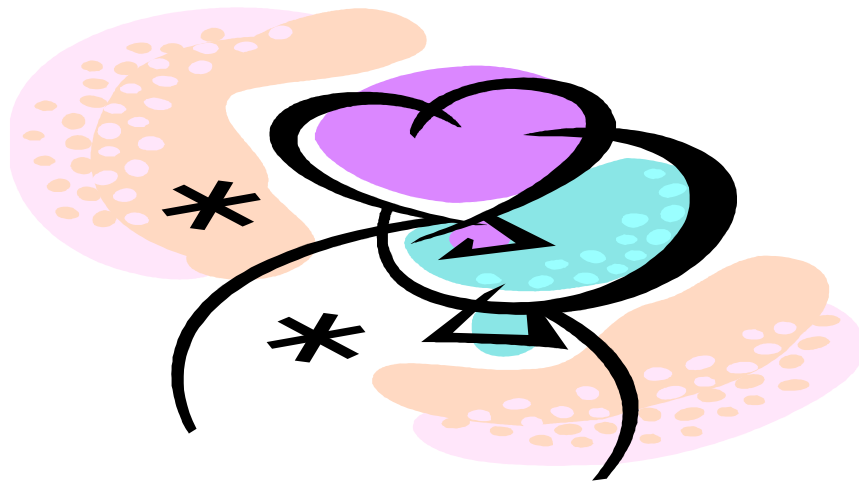
Hao 3/21/04

Raey 3/27/07

Kayla F. 3/11/07

Maura 3/3

Dionis 3/18/05



Edelyn 3/27/07

Isaiah 3/16/05

Savion 3/7/06

Omar 3/16/04

Jayla 3/7/04

Ousmane 3/5/0